

**Hauptständer  
 Centre Stand**

**HONDA Varadero XL 125 V**

**Montagehinweise**

Alle vom Motorrad gelösten Schrauben sind gemäß Herstellerangaben wieder zu montieren, oder mit von SW-MOTECH gelieferten Schrauben zu ersetzen. Falls nicht anderweitig definiert, diese Schrauben nach Tabelle anziehen.

M6	9,6 Nm
M8	23 Nm
M10	46 Nm

Gegebenenfalls Schrauben mit flüssiger Schraubensicherung einkleben.

Prüfen Sie nach 50km alle Verbindungen auf festen Sitz.

Die Kurvenfreiheit kann durch einen Hauptständer eingeschränkt werden

SW-MOTECH GmbH & Co. KG  
 Bahnhofstrasse 44d  
 35282 Rauschenberg  
 -Germany-

Tel.: ++ 49 (0) 6425 8168 00  
 Fax: ++ 49 (0) 6425 8168 10

www.sw-motech.com

**Mounting Instructions**

Centerstand cornering clearance:  
 SW-MOTECH centerstands are carefully designed and tested to eliminate reductions in cornering clearance and ground clearance under most driving conditions on an unmodified stock motorcycle, and are certified to be compliant with European ABE safety standards. Use of any centerstand may reduce cornering clearance or ground clearance under extreme driving situations.



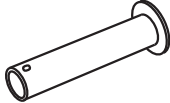


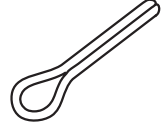
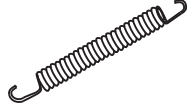
SW-MOTECH products should be installed by a qualified, experienced motorcycle technician. If you are unsure of your ability to properly install a product, please have the product installed by your local motorcycle dealer. SW-MOTECH takes no responsibility for damages caused by improper installation.

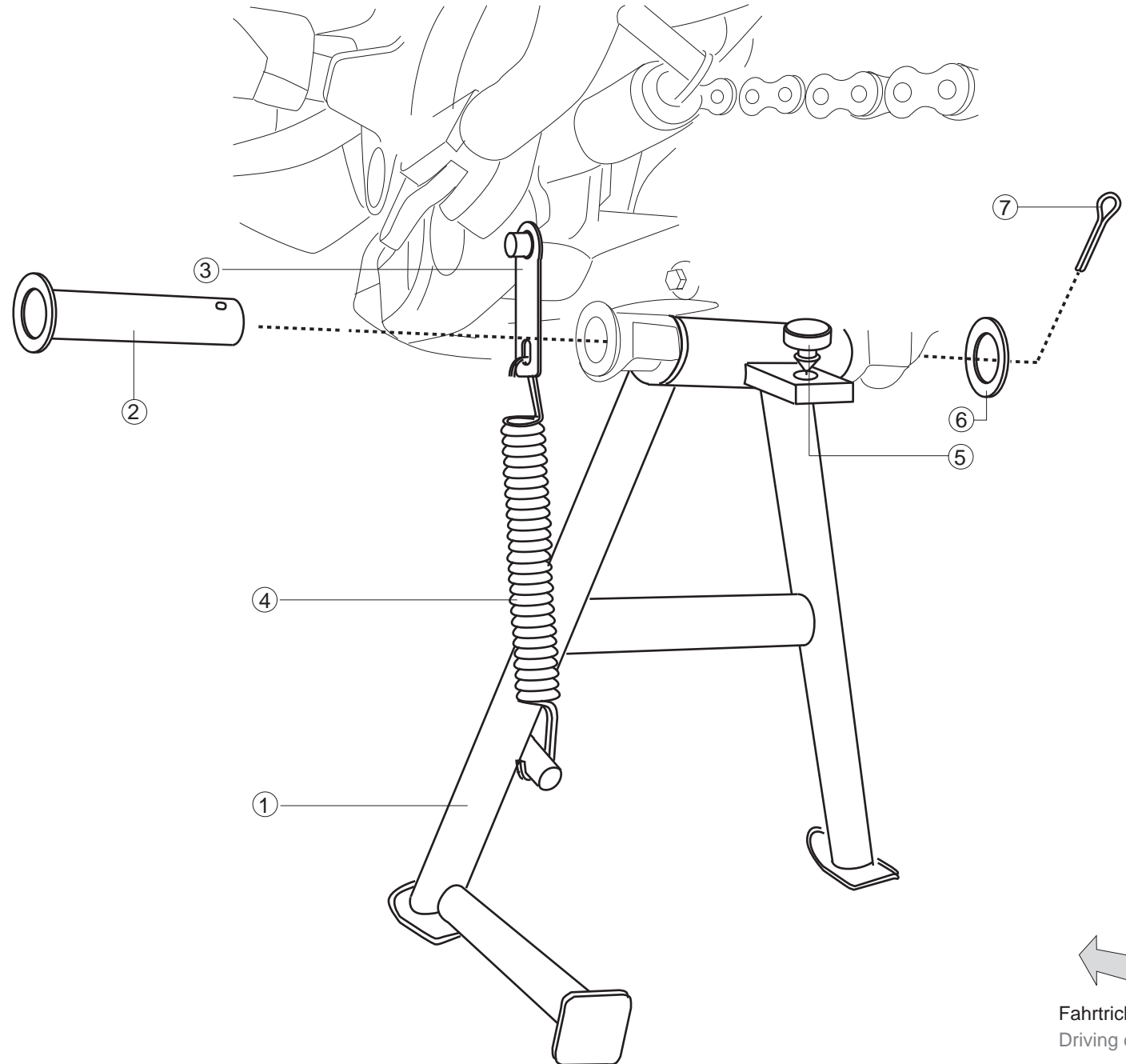
All screws, bolts, and nuts, including all replacement hardware provided by SW-MOTECH, should be tightened to the torque specified in the OEM maintenance manual for your motorcycle. If no torque specifications are provided in the OEM maintenance manual, the following torques may be used:

M6	9,6 Nm
M8	23 Nm
M10	46 Nm

All screws, bolts, and nuts should be checked after driving the first 50 km to ensure that all are tightened to the proper torque.

Medium strength liquid thread-locker (i.e., "Loctite") should be used to secure all screws, bolts, and nuts.

<p><b>1</b> Hauptständer Centre Stand</p>  <p>HPS.01.082.900 Anzahl/ Pcs. 1</p>	<p><b>5</b> Gummianschlag Rubber Element</p>  <p>MSS.00.003.016 Anzahl/ Pcs. 1</p>
<p><b>2</b> Steckachse Axle</p>  <p>HPS.01.082.002 Anzahl/ Pcs. 1</p>	<p><b>6</b> Unterlegscheibe Washer</p>  <p>A 21 DIN 125 Anzahl/ Pcs. 1</p>
<p><b>3</b> Federumlenkung Spring Reverse</p>  <p>HPS.01.082.001 Anzahl/ Pcs. 1</p>	<p><b>7</b> Splint Pin</p>  <p>3.2 x 25 DIN 94 Anzahl/ Pcs. 1</p>
<p><b>4</b> Zugfedersatz Spring Set</p>  <p>ZFD.00.150.003 Anzahl/ Pcs. 1</p>	



**!** Achtung:  
Die Kurven- und Bodenfreiheit kann durch einen Hauptständer eingeschränkt werden.

Attention:  
Cornering and ground clearance can be reduced by using a centre stand.