

# GIVI-Koffer

**1** Senkschraube mit Innensechskant  
 Counter Sunk Screw



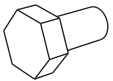
M6 x 25    DIN 7991  
 Anzahl/ Pcs.    4

**5** Gummianschlag  
 Rubber Element




KFT.00.300.052B  
 Anzahl/ Pcs.    8

**2** Sechskantschraube  
 Hexagon Screw




M6 x 12    DIN 933  
 Anzahl/ Pcs.    4

**6** Unterlegscheibe  
 Washer




A 6,4    DIN 125  
 Anzahl/ Pcs.    4

**3** Führungsbolzen  
 Guide Sleeve



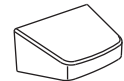
KFT.00.117.006  
 Anzahl/ Pcs.    4

**7** Mutter mit Bund  
 Nut

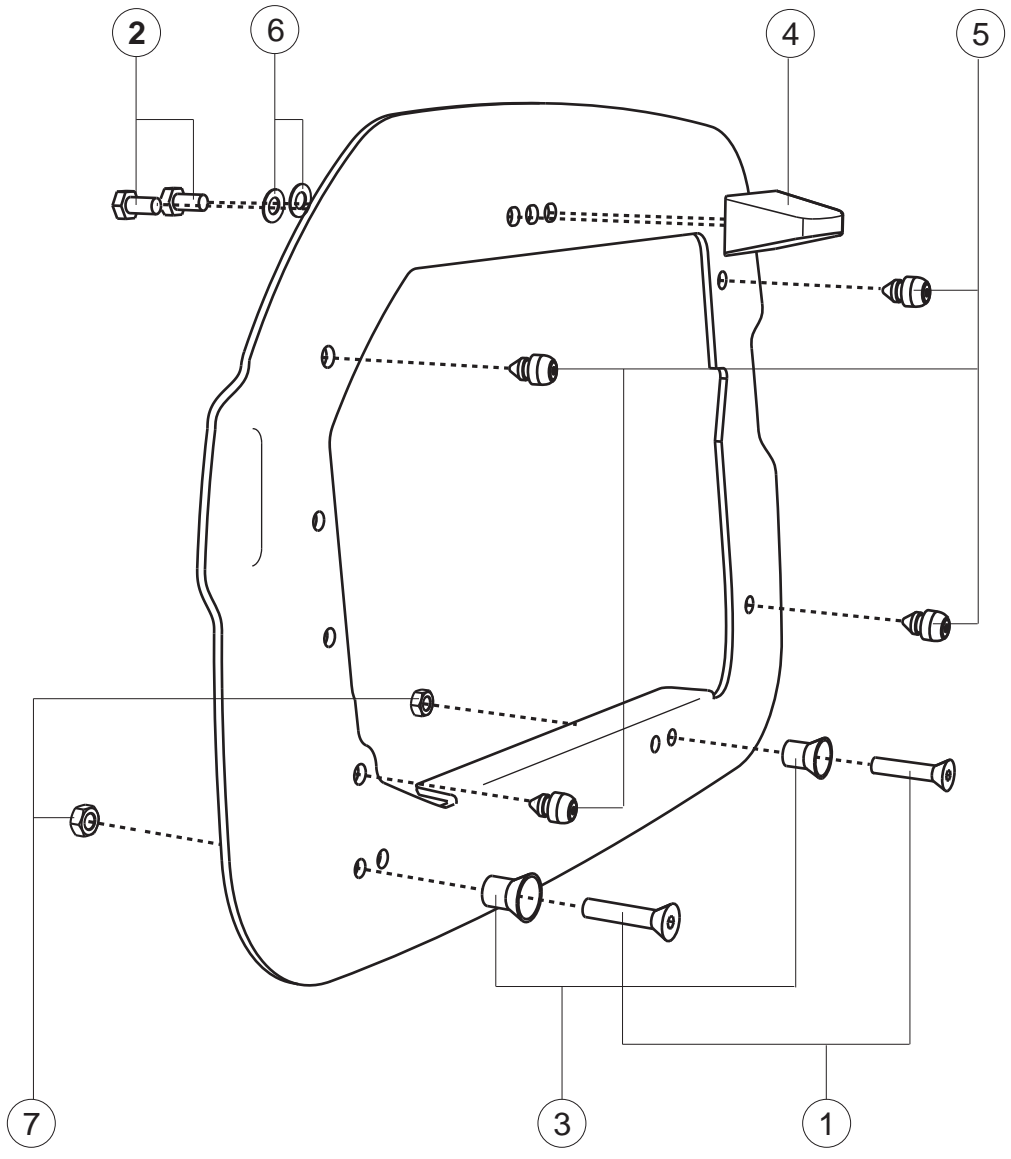


M 6    DIN 6927  
 Anzahl/ Pcs.    4

**4** Schloßnase GIVI Koffer  
 Lock Pin GIVI Bag



KFT.00.117.009  
 Anzahl/ Pcs.    2



  
 Fahrtrichtung  
 Driving direction

SW-MOTECH GmbH & Co. KG  
 Bahnhofstrasse 44d  
 35282 Rauschenberg  
 -Germany-

Tel.: ++ 49 (0) 6425 8168 00  
 Fax: ++ 49 (0) 6425 8168 10

www.sw-motech.com